

2013 MS619ST/MX620ST/MW621ST Sales Kit

Jessica Lin

DJA0/ PM

BenQ

Sep, 2013

- 各項資料皆有其時效性的限制，演講者暨明基集團所屬公司，對於所提供的資料不負任何明示或暗示的保證責任，也不負任何形式的賠償責任。
- The contents contained herein is time bound in nature; BENQ Corporation (and its affiliated companies) and the speaker do not make any express or/and implied warrant on the accuracy of the contents. Neither do indemnify any form of loss or damage occurred.

Content



- 2013 New Models
- Key Message / Features Introduction
- Appendix :
 - Feature Matrix/Software Compatibility
 - Key Features Demo SOP
 - FAQ
 - Competitor Analysis

2013 Models

MS619ST/MX620ST/MW621ST

MS619ST



High Picture Quality

- SVGA Native Resolution
- 3000 ANSI Lumens
- 13000:1 Contrast Ratio
- 6 Segments Color Wheel (RGBYWC)

Flexible Installation

- Throw ratio 0.9~1.08 (54.5" @ 1m)
- Manual Keystone Vertical + -40

Good Sound Solution

- 10W Speaker
- Audio in / out

Thoughtful Design

- PC-less Presentation: USB Reader
- Plug and Play: USB Display
- Wireless Display

Complete Connectivity

- D-sub in x1 / D-sub out x1 / Composite x1 / S-video x1 / HDMI V1.4 x1 / Audio in L/R x1 / Audio in mini-jack x1 / Audio out mini-jack x1 / USB Type A x1 / USB Type mini B x1 / RS232 x1



MX620ST



High Picture Quality

- XGA / WXGA Native Resolution
- 3000 ANSI Lumens
- 13000:1 Contrast Ratio
- 6 Segments Color Wheel (RGBYWC)

Flexible Installation

- Throw ratio 0.9~1.08 (54.5" @ 1m)
- Manual Keystone Vertical + -40

Good Sound Solution

- 10W Speaker
- Audio in / out

Thoughtful Design

- PC-less Presentation: USB Reader
- Plug and Play: USB Display
- Wireless Display

Complete Connectivity

- D-sub in x1 / D-sub out x1 / Composite x1 / S-video x1 / HDMI V1.4a x1 / Audio in L/R x1 / Audio in mini-jack x1 / Audio out mini-jack x1 / USB Type A x1 / USB Type mini B x1 / RS232 x1



MW621ST



High Picture Quality

- XGA / WXGA Native Resolution
- 3000 ANSI Lumens
- 13000:1 Contrast Ratio
- 6 Segments Color Wheel (RGBYWC)

Flexible Installation

- Throw ratio 0.72~0.87 (64"@ 1m)
- Manual Keystone Vertical ± 40

Good Sound Solution

- 10W Speaker
- Audio in / out

Thoughtful Design

- PC-less Presentation: USB Reader
- Plug and Play: USB Display
- Wireless Display

Complete Connectivity

- D-sub in x1 / D-sub out x1 / Composite x1 / S-video x1 / HDMI V1.4a x1 / Audio in L/R x1 / Audio in mini-jack x1 / Audio out mini-jack x1 / USB Type A x1 / USB Type mini B x1 / RS232 x1



Key Message/ Key Feature Details

Key Message



Designed with your needs in mind, BenQ education projectors help you save time, money and effort.

Power Saving (Smart Eco)

Eco Blank
Mode

SmartEco
Technology

Audio Pass
Through

Standby Power
<0.5W

Low Maintenance cost

Upper Lamp
Door

Kensington
Lock

Setup easily

Quick release
button

Short Throw

Quick Install

Support presenter Instruction

Auto Power Off

Auto Blank

Wireless Display

USB Display

USB Reader

Power Saving (Smart Eco)

Eco Blank



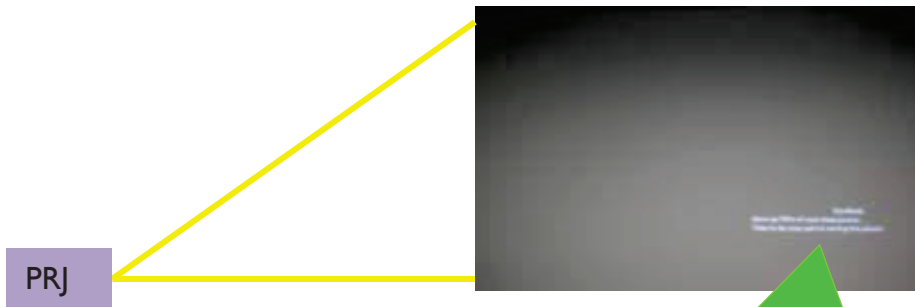
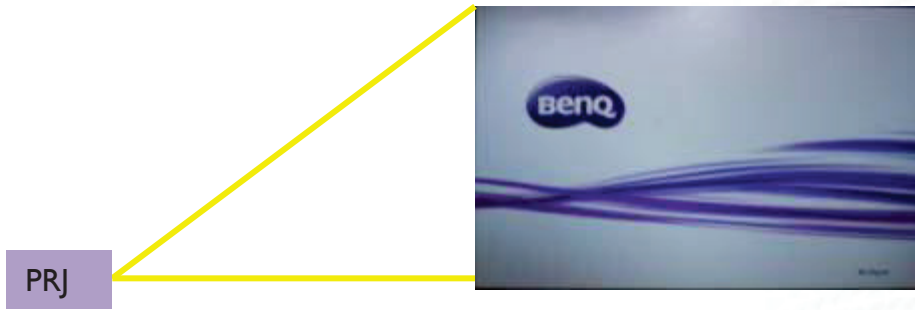
Eco Blank Mode

Smart Eco Technology

Audio Pass Through

Stand by Power <0.5W

Power Saving



By blanking the projection screen, teachers get to redirect students' focus back on them while keeping the Earth lookin' great

Save up 70% of your lamp power.
Time to do your part in saving the planet.

Blank the screen and conserve lamp power by up to 70% when the projector is not actively in use

Smart Eco



Energy Consumption for a Projector Lamp System on an Average Chinese School Day.

Power Saving

Eco Blank Mode

Smart Eco Technology

Audio Pass Through

Stand by Power <0.5W

Usage Profile	Mins	No SmartEco	With SmartEco	With LampSave
On – Searching for Input	2	100%	75%	75%
On – Other Content (Actively Used)	30	100%	100%	80%
On – Other Content (Still image for 5 mins)	60	100%	30%	30%
On- Full Screen Film	10	100%	65%	65%
On- Full Screen Photo	1	100%	65%	65%
On- Full Screen Photo- Same image for 5 mins	2	100%	65%	65%
On- Content Off	15	100%	20%	20%
Average Energy Consumption		100%	50%	46%
Total using time in a cycle	120			

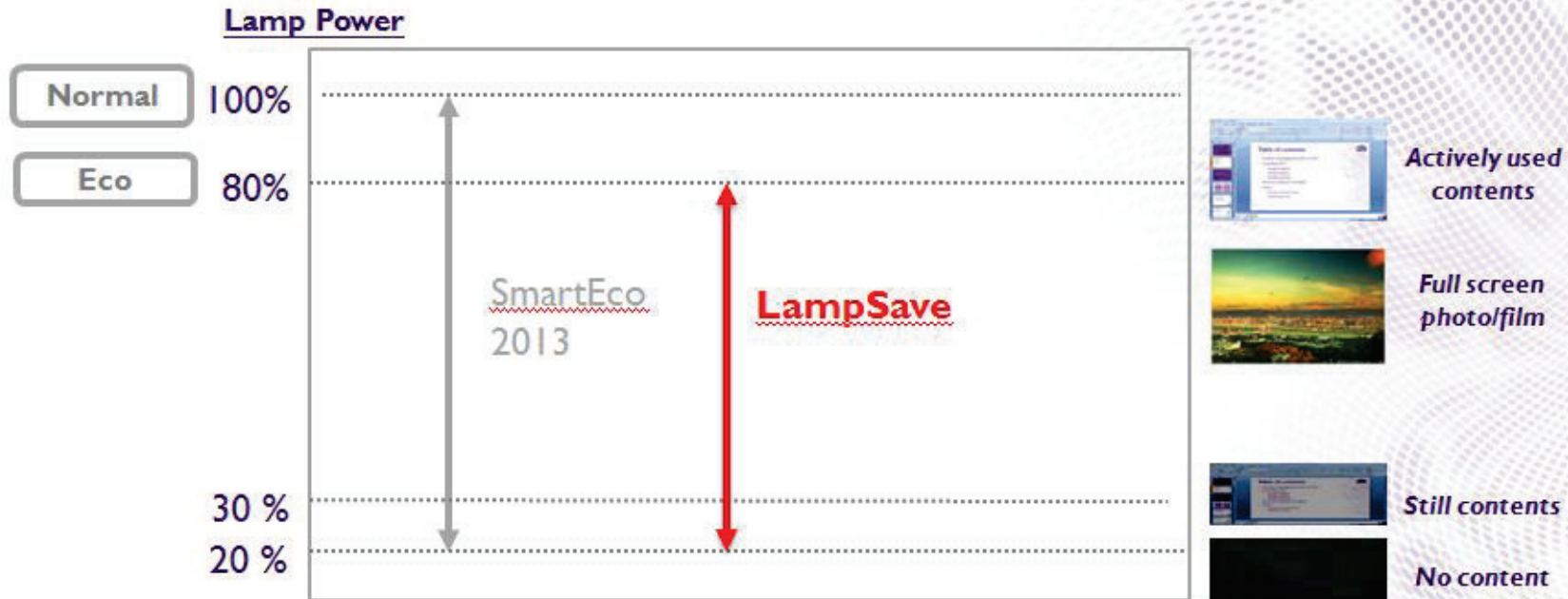
SRC: White Paper Prepared by Futuresource Consulting. Sponsored by Philips Lighting

According to above simulation, there is an energy saving opportunity of 50% in the classrooms with SmartEco, and 54% with LampSave.

Dynamic Adjustment



Projector can auto adjust lamp power based on input content.



LampSave can reach for longest lamp life than other lamp modes, maximum to 10,000* hours lamp life

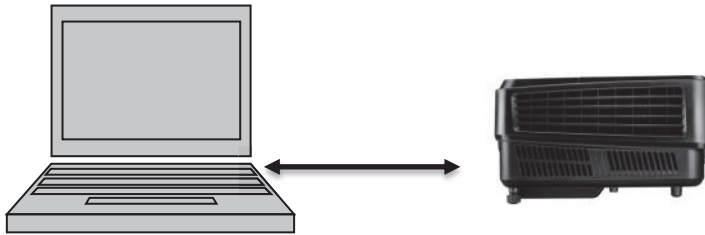


No Source Detected Mode

Eco Blank Mode

- When projector doesn't detect a display source for 3 minutes, or when user activate Eco Blank Mode, the lamp power will drop to only 30%

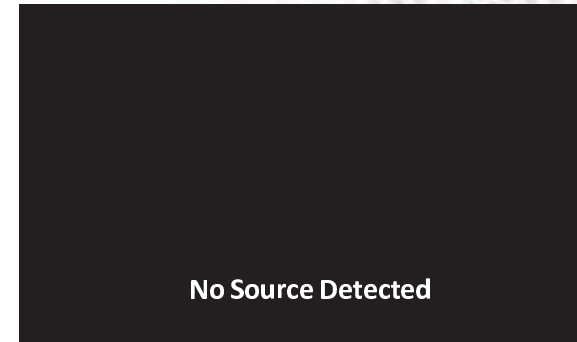
Smart Eco Technology



Audio Pass Through

Source detected: 100 - 30% lamp power

Stand by Power <0.5W



No Source Detected/ Eco Blank: dim to 30% lamp power

Power Saving

Audio Pass Through



Eco Blank Mode

Smart Eco Mode

Audio Pass Through

Stand by Power <0.5W

Power Saving



MS619ST / MX620ST / MW621ST

Preserving lamp life when teachers only need sound.
Audio is fully function when projector is in standby mode (lamp off)

Stand by Power <0.5W



100% EU regulation compliance.

Standby mode <0.5W

Power Saving

Eco Blank Mode

Smart Eco Mode

Audio Pass Through

Stand by Power <0.5W



Reduce electronic waste in stand-by mode!



Low Maintenance Cost



Upper Lamp Door

Upper Lamp Door

Lamp Door



Low Maintenance cost

Kensington Lock

Projector lamp door is positioned on top for easy access and maintenance!



Kensington Lock

Protect your projector with two kinds of lock

- Kensington lock

Upper Lamp Door

Low Maintenance cost



Kensington lock

Kensington Lock



MS619ST/MX620ST/MW621ST all equipped with Kensington lock allowing easy attachment of a security chain!

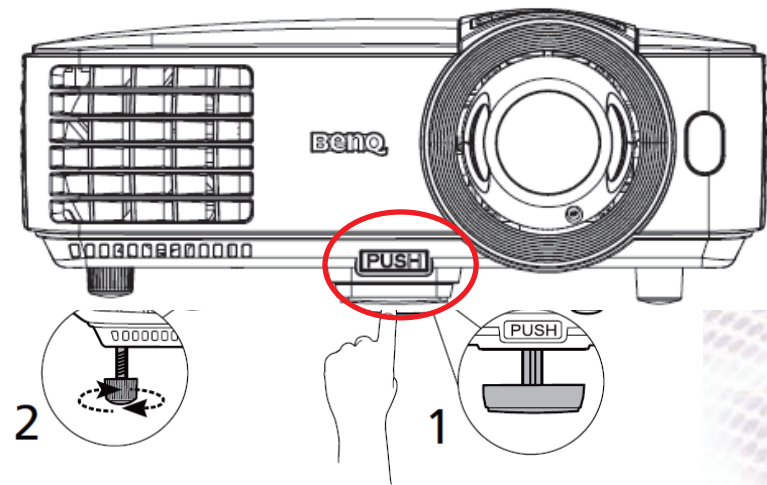


Setup easily

Quick release button



Quick release button



Short Throw



Quick Install

MS619ST/MX620ST/MW621ST with Quick-release button, projector placement can be less hassle.

Setup easily

Short throw



Quick release button



Short Throw

- Short throw lens realizes **big screen** either for entertainment in small living rooms/bedrooms or for business in small meeting room.
- Creating large images with a short throw distance **prevents image obstruction and shadows** on the screen caused by furniture or presenter.
- **Short throw with zoom lens enables more flexible to be set up at any place.**

Quick Install

Setup easily

Rapid Access to Quick Install

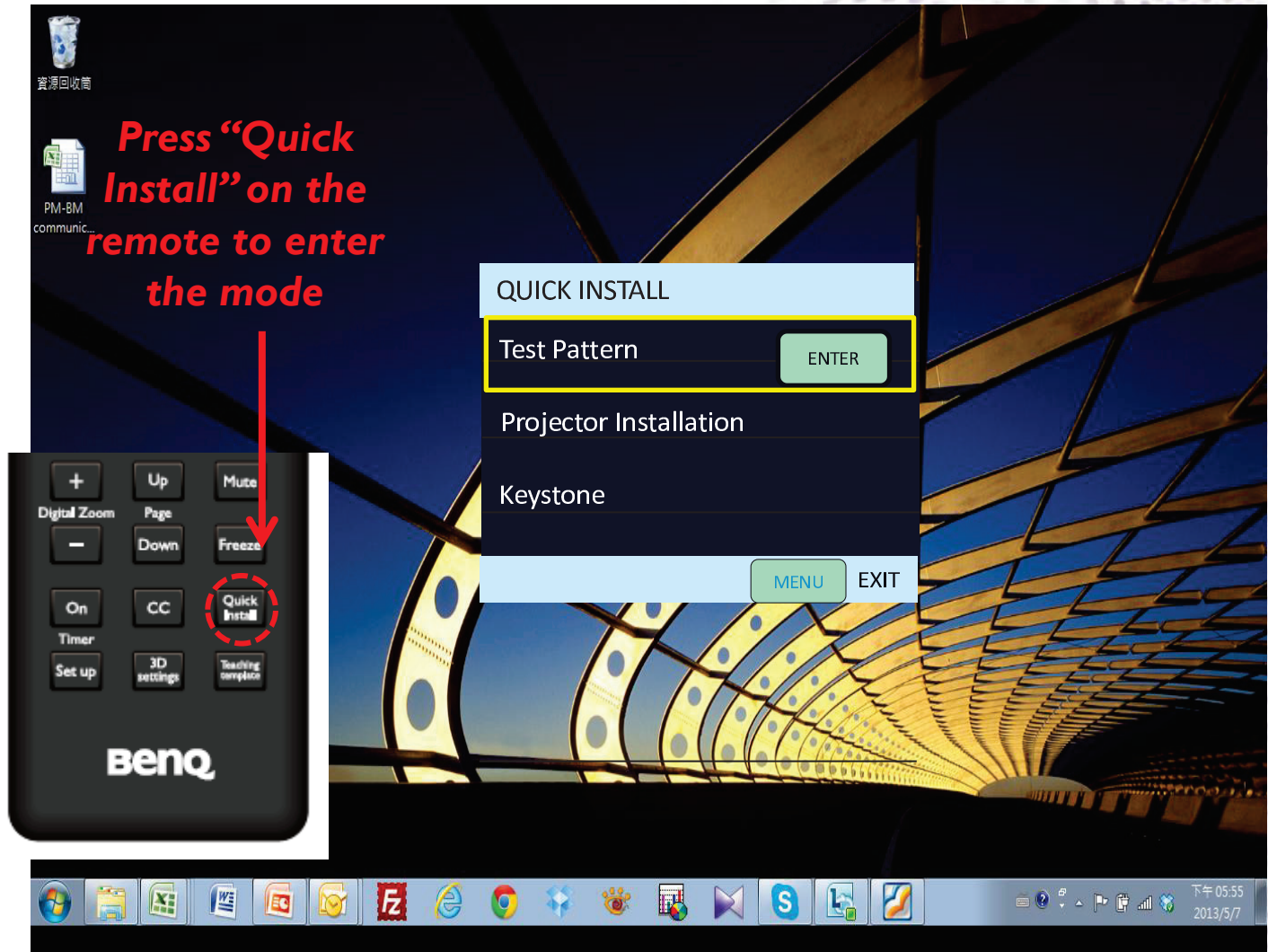


Quick release button

Short Throw

Quick Install

Setup easily

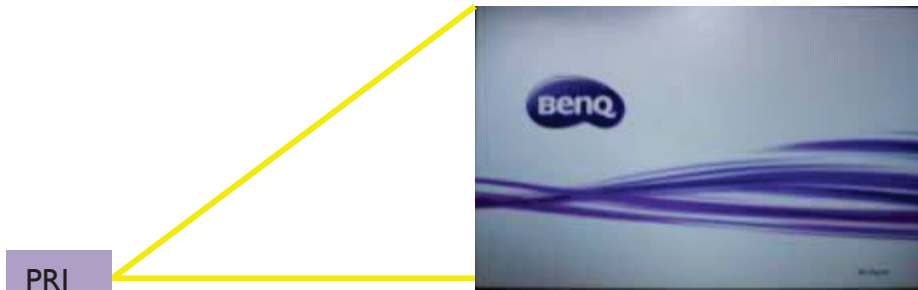


Only press one key to have the Menu for screen adjustment

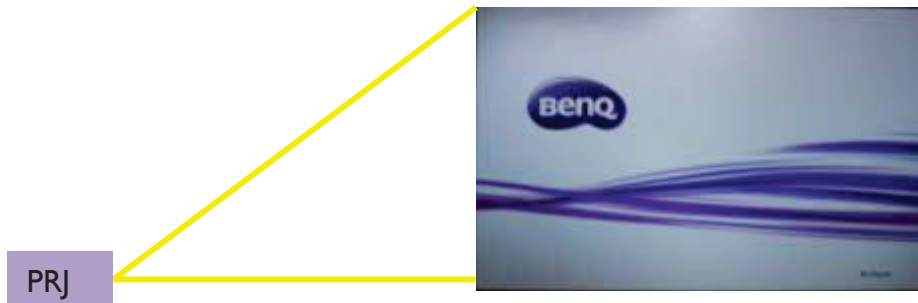


Auto Power Off

Thoughtful Designs	Auto Power Off
	Auto Blank
	Wireless Display
	USB Display
	USB Reader



Without input source



Default value is 30 mins



Remind user this projector is closing



Projector is power off

With considering power management feature



Auto Blank

Auto Power Off

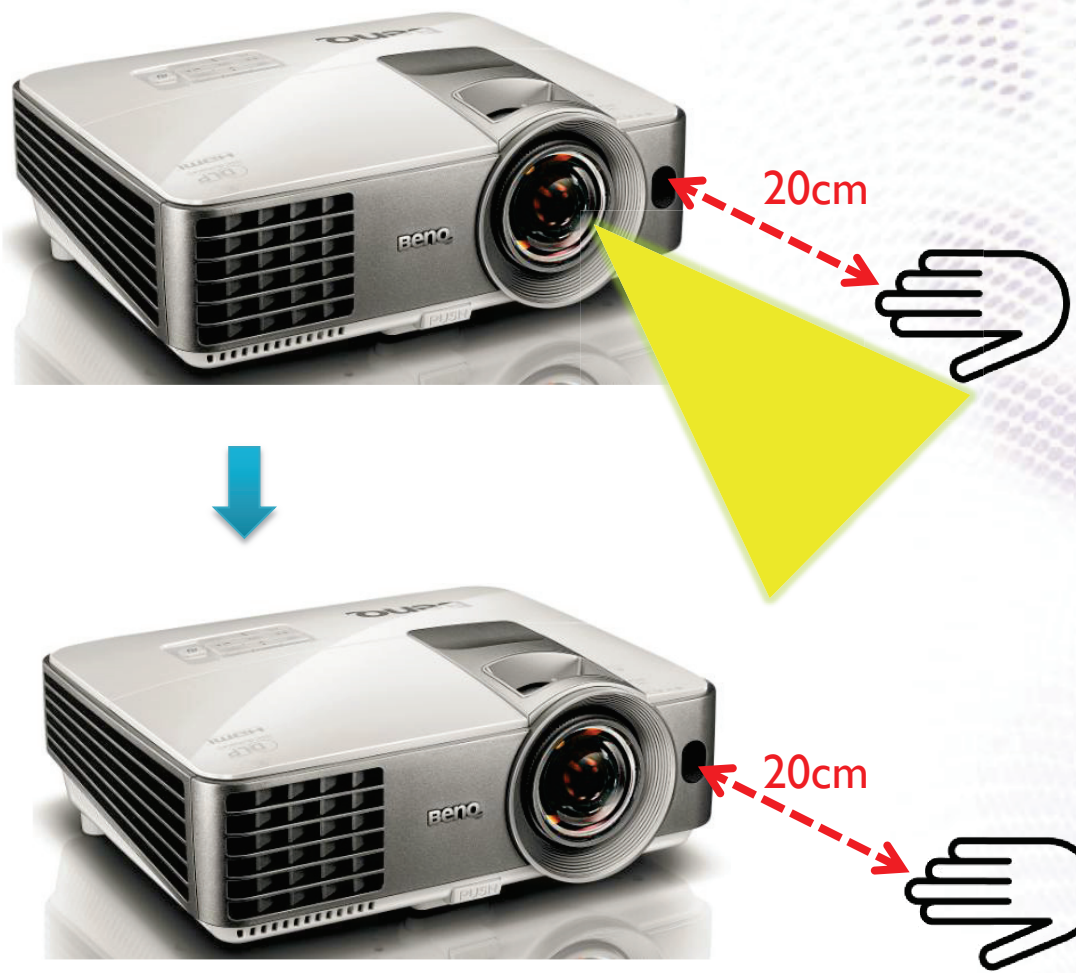
Auto Blank

Wireless Display

USB Display

USB Reader

Thoughtful Designs



Auto blank can protect user's eyes incase user getting too close to the lens

Wireless Display

MS619ST / MX620ST / MW621ST



Qpresenter SW



One dongle for wireless display

Thoughtful Designs

Auto Power Off

Auto Blank

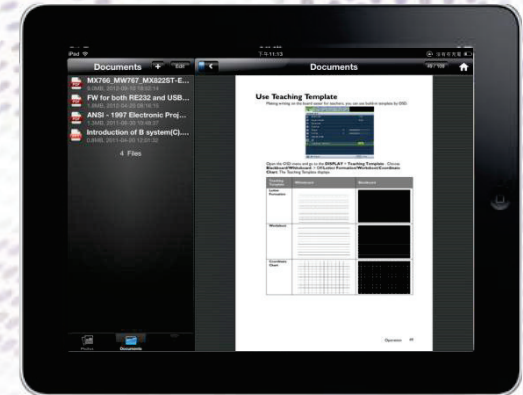
Wireless Display

USB Display

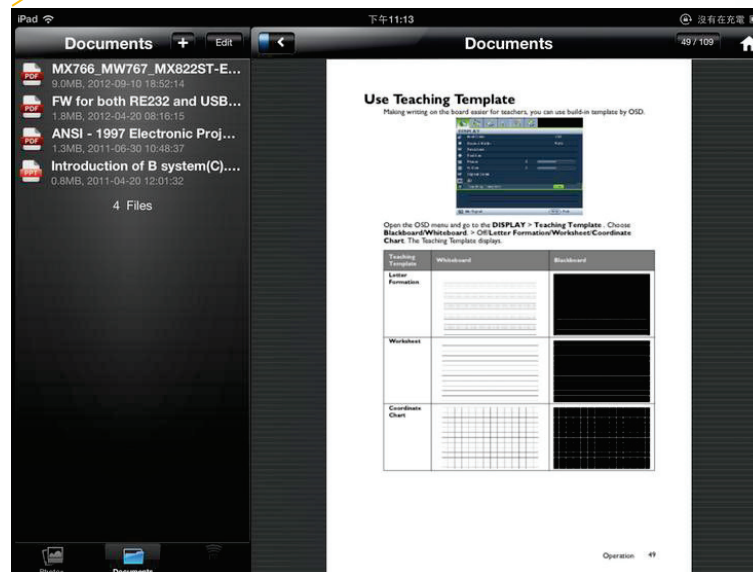
USB Reader

Wireless Display

MS619ST / MX620ST / MW621ST



Qpresenter APP by
iPhone/iPad



Bring your own device

One dongle for wireless display

Auto Power Off

Auto Blank

Wireless Display

USB Display

USB Reader



USB Display

Auto Power Off

Auto Blank



Wireless Display



USB Display



USB Reader

Display presentation



USB type mini B

USB type A

Projector lamp door is positioned on top for easy access and maintenance!

Thoughtful Designs



USB Reader

Supported image formats :

- JPEG(JPG) • PNG • TIFF • BMP • GIF • PDF



PC Free Presentation in Class !!

Users can leave their laptop at office and just bring one USB thumb drive to the meeting room !!

Thoughtful Designs

Auto Power Off

Auto Blank

Wireless Display

USB Display

USB Reader

Features Matrix/ Software Compatibility

Feature Matrix



		Small- Medium Class 3000 AL	Small- Medium Class 3000 AL	Small- Medium Class 3000 AL
		MS619ST	MX620ST	MX621ST
Interface	HDMI	1.4a	1.4a	1.4a
	Speaker	10W	10W	10W
Feature	Instant Restart	✓	✓	✓
	*Wireless Display	✓	✓	✓
	USB display	✓	✓	✓
	USB Reader	✓	✓	✓
	SmartEco Mode	✓	✓	✓
	Eco Blank Mode	✓	✓	✓
	DLP 3D	✓	✓	✓
	Stand by Power	<0.5W	<0.5W	<0.5W
Accessory	Carry Bag	Optional	Optional	Optional

Key Features Demo SOP

- Wireless Display (Audio + Video)
- USB Display (Audio + Video)



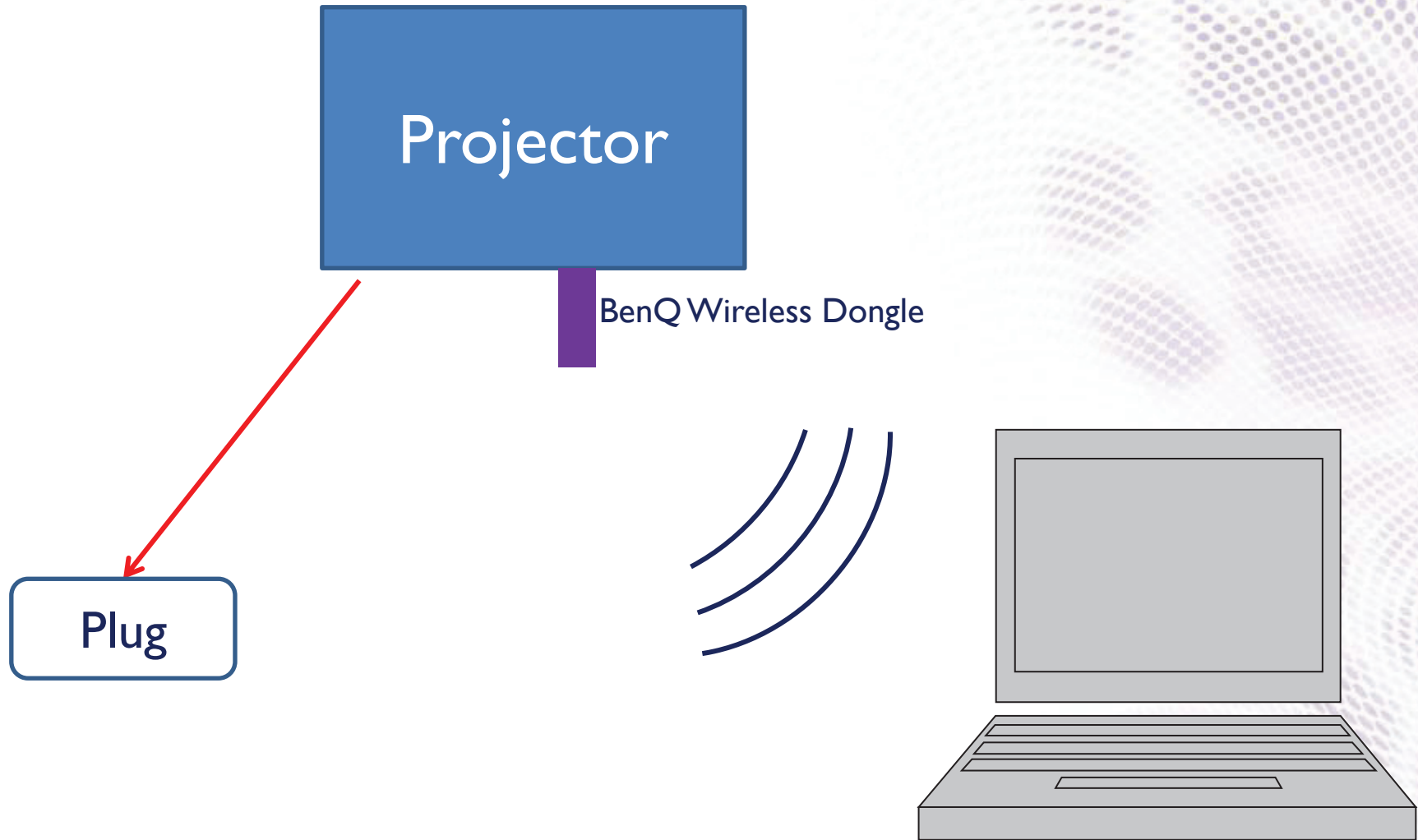
Wireless Display Demo



Equipments

- MS619ST / MX620ST / MW621ST x 1
- Power cord x 1
- BenQ Wireless Dongle x 1
- Laptop x 1

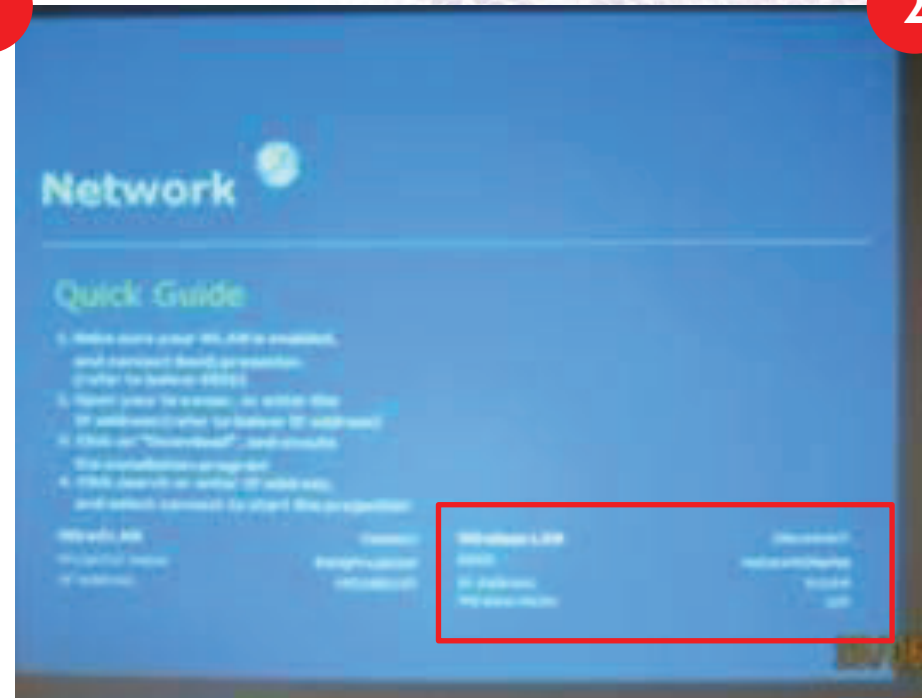
How to connect



Steps



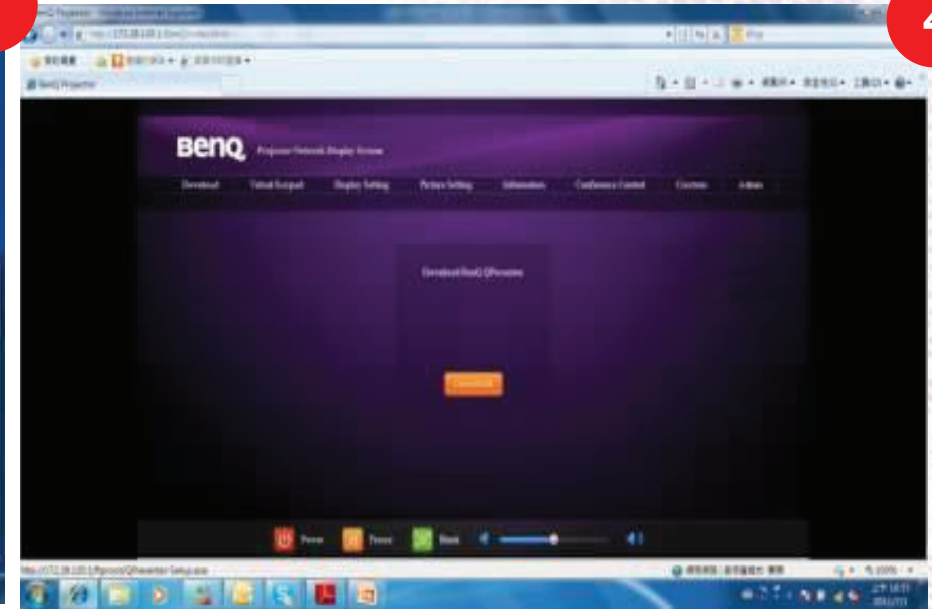
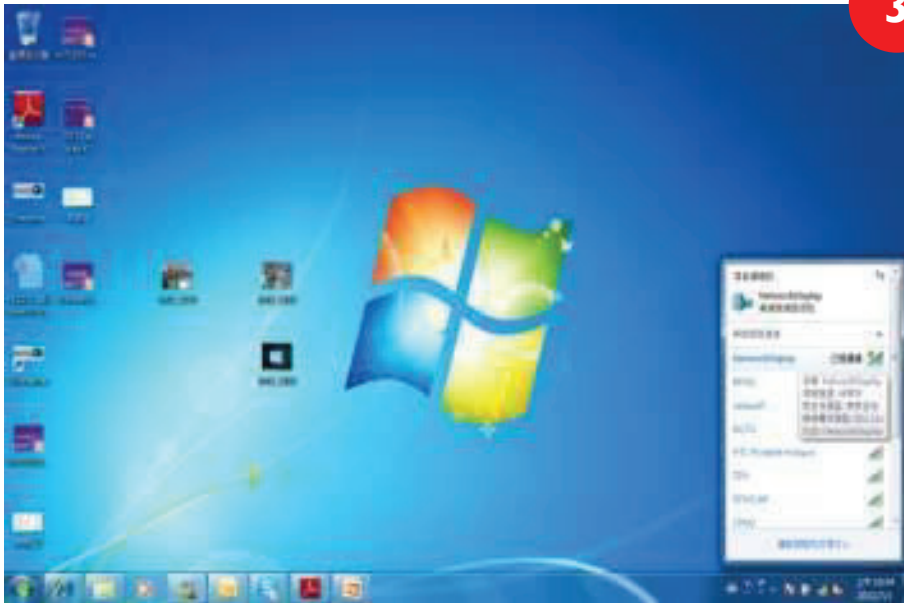
- ① Turn on projector/ Plug in BenQ wireless dongle to USB Type A port.
- ② Switch source to “Network display” / Check Wireless IP address shown on the screen.



Steps



- ③ Select “Network Display” on wireless list on laptop
- ④ Open IE, type in IP address to download Qpresenter



Steps



- ⑤ Open Qpresenter and click “search”
- ⑥ Click connect to display the image.



Take Away Message :
All you need is a power cord, users can display wirelessly.



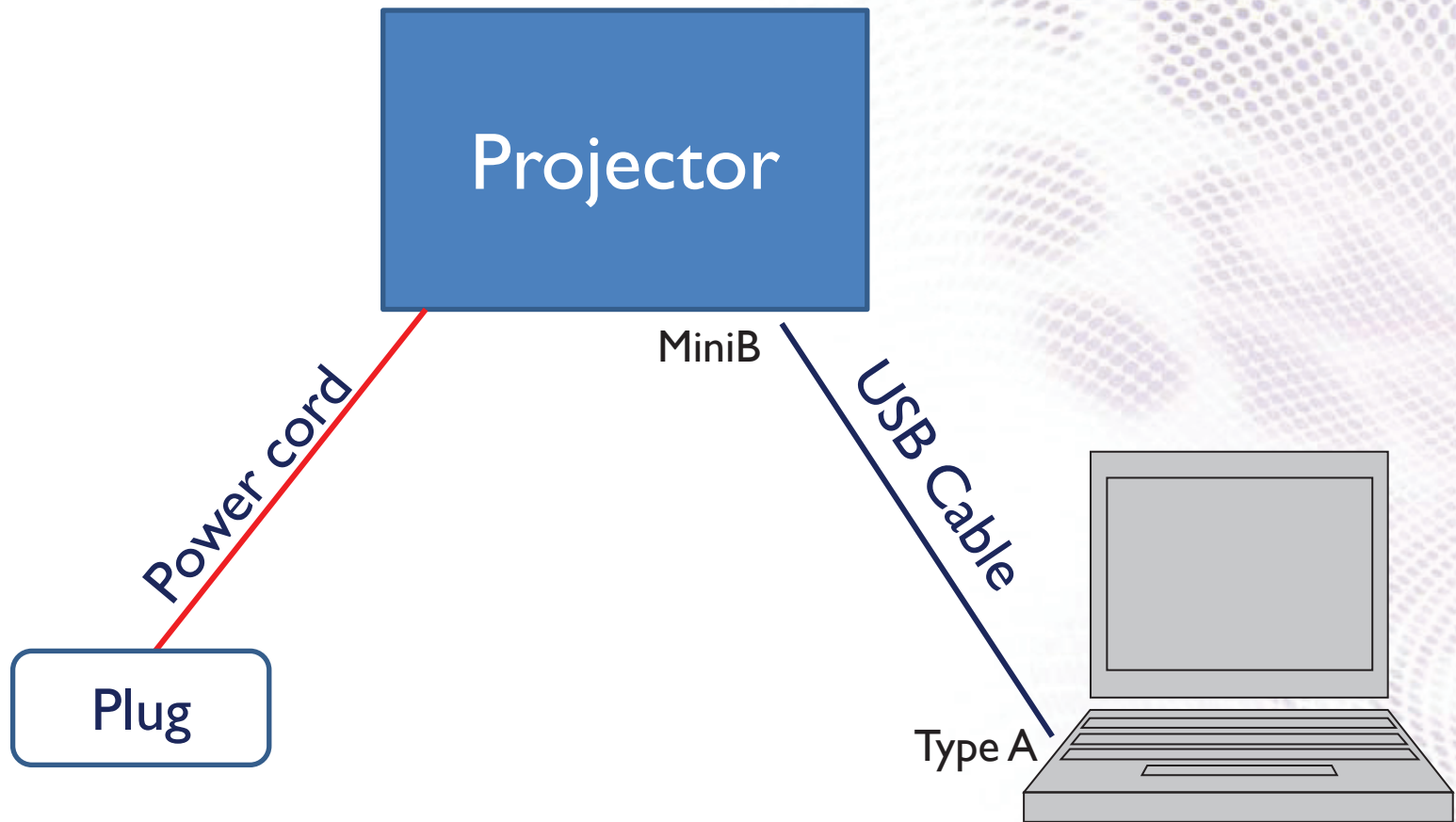
USB Display Demo



Equipments

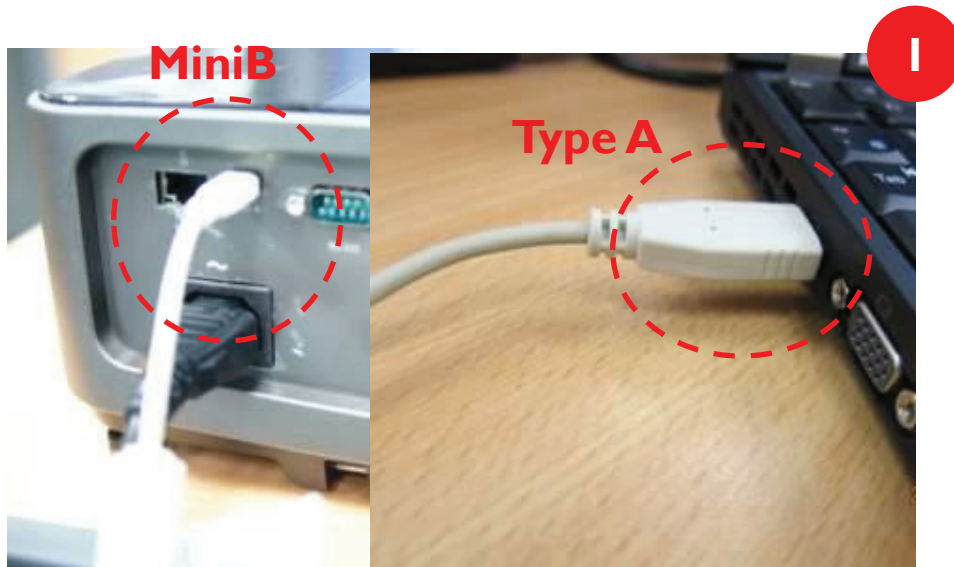
- MS619ST / MX620ST MW621ST x 1
- Power cord x 1
- USB cable x 1 (Type A <-> Mini B)
- Laptop x 1

How to connect



Steps

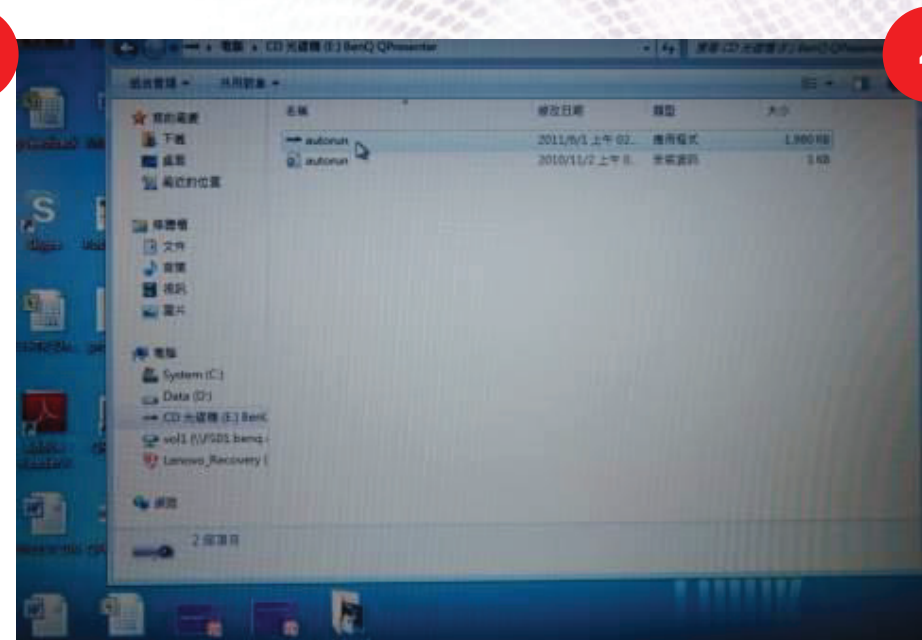
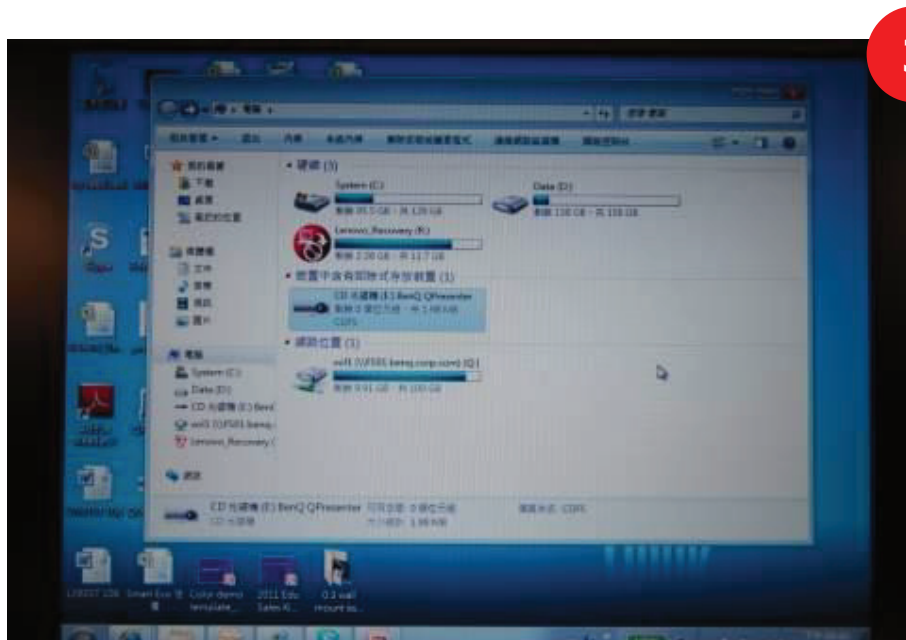
- ① Connect USB cable to projector and laptop.
- ② Switch source to “USB display” on projector.



Steps



- ③ Go to “My Computer”, click “BenQ Qpresenter” on laptop.
- ④ Select “AutoRun”



Steps



- ⑤ Open a document to display





FAQ

Wireless Display Related Questions



Q: Do I need to download Qpresenter to display ?

A: Yes, users need to download Qpresenter before they can display via LAN.

Q: Where can i download Qpresenter ?

A: Go to web control page to download the Qpresenter.

Q: Where can i download Qpresenter APP for iOS version?

A: Go to Apple store and search "Qpresenter". And it's free for user to download.

Q: If I use Mac, can I also display image via LAN?

A : Yes, projector can auto detect if it is a PC or MAC linked, if you are using Mac, the Qpresenter downloaded will be Mac version.

Q: What's the frame rate for LAN display?

A: 8~10 frames per second.

SmartEco Related Questions



Q: If I turn SmartEco on, will it affect my presentation ?

A: No, users won't feel the visual differences.

Q: How do I turn on SmartEco ?

A: SmartEco is default value, it is already on when you get the projector.

Q: Can I turn the SmartEco off ?

A: SmartEco can be turned off by changing the lamp setting to "Normal".

Q: How long should I wait for SmrtEco to work ?

A: As long as projector finish turning on, it starts working.

Others



Q: How to measure the maximum brightness of my projector ?

A: Adjust the picture mode to “Dynamic”. (Default value is “Presentation”)

Q: Where do I download the Qpresenter?

A: Make sure your laptop is connected to projector via LAN, go to web control page to download the Qpresenter.



Enjoyment Matters